



WILD HORSE CUSTOM HOMES

Plan	Bedrooms	Baths	Sq. Feet*	Base Price
2195	3 - 4	2	2195	\$384,990
2335	3	2	2335	\$409,990
2501	3	2	2501	\$419,990
2782	4	2 1/2	2782	\$459,990

House Only. All houses include 3 car garage.
Any of the above homes can be built on your land. Ask our sales staff for details.
*Square footage approximate.

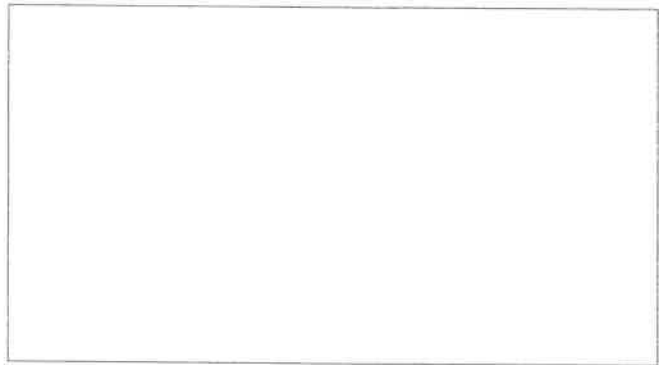


**R.L. Workman
Homes, L.L.C.**

License # ROC253161
For more information:
(520) 458-0771

www.rlworkmanhomes.com

BROKER PARTICIPATION WELCOME



ENVIRONMENTS FOR *Living*

Because of R. L. Workman, L.L.C.'s continuing and ongoing program of research in housing, and the possibility of material shortages, there may be current or future changes made in the building products, materials, methods or design used in your home which may be reflected in the construction of our models. Square footage is approximate. Modifications and price changes such as these may be made without prior notice. Lot premiums may apply.

04/10/2023

WILD HORSE CUSTOM HOMES



Quality Construction As a local, family-owned company, R.L. Workman Homes, LLC takes pride in their reputation. All plans are stamped by an independent, licensed structural engineer to ensure quality construction from the ground up. The foundation, roof truss and framing system are all designed for structural stability.

Energy Efficient Home ALL homes built by R.L. Workman Homes, LLC earn 2 certifications to save YOU money on your utility costs: Energy Star Certified Home (energystar.gov), Environments for Living Guarantee (environmentsforliving.com). Homes also include high performance Low-E Dual Pane Milgard vinyl windows.

Granite Countertops Thick, luxurious granite countertops in the kitchen with an undermount stainless steel sink. Granite countertops in the bathrooms with undermount sinks.

Stainless Steel Appliances Stainless steel self-cleaning electric range, dishwasher, and microwave/hood. Extensive upgrade options are available.

These models feature:

Custom Crafted Features

- Milgard Tuscany windows with grids (Front only)
- Fiberglass entry door with handleset and deadbolt
- Interior raised panel doors with levers
- 1st upgrade carpet and 1st upgrade pad
- 18" ceramic tile floors (entry, kitchen/nook, bathrooms, utility)
- Vaulted ceilings (per plan)
- Rounded interior vertical corners (excluding windows)
- Hawk and trowel interior drywall finish
- Recessed cans in the kitchen
- 2 ceiling fan prewires
- Prewired for 2 TV outlets, 2 ethernet outlets
- Color through roof tile
- Two-tone exterior paint
- Engineered foundation
- Covered patio
- Masonry rear yard with wrought iron gate
- Front yard landscaping with drip irrigation
- Front and rear hose bibbs
- Smoke/carbon monoxide detectors
- Finished garage
- Garage door opener(s)
- 1 Carriage light
- 200 AMP electrical service
- 25' concrete apron driveway in front of garage doors
- Underground utilities
- Standard septic system and building pad

Deluxe Kitchens

- Maple cabinets with 36" uppers, crown molding
- Granite slab countertop with undermount stainless steel sink
- Delta pull-out faucet
- Stainless steel electric range, microwave and dishwasher

Luxurious Bath Designs

- Brushed nickel faucets, towel bars, and trim package
- Pencil edge medicine cabinet
- 3 cm granite slab countertop with undermount sinks
- 4" x 12" ceramic tile shower/tub surrounds
- Executive height vanities
- ProFlo dual flush elongated toilets with soft close lid
- Pressure balanced anti-scald valve at shower and tub

Energy Efficient Features

- Energy Star Home
- Environments for Living Home
- High performance Milgard vinyl windows with SunCoat Low-E glass
- Stucco insulated exterior wall assembly with cavity rating R-21 (R-29 with 2x6 wall)
- Energy efficient R-38 blown insulation in ceilings
- 40 gallon gas water heater and gas furnace
- PEX pipe for fresh water (lead free)
- On-demand recirculation pump
- Energy efficient 15 Seer air conditioning
- Programmable thermostat
- Plumbed gas lines to dryer

Optional Features

- Smart house
- Bay windows
- Custom closets
- Window treatments
- Rain gutters
- Fireplace, pellet stove
- Colored concrete
- Landscaping, built-in grill, courtyard

Quality Construction Features

- Engineered roof truss & framing system
- Engineered foundation
- Stamped by an Independent Licensed Structural Engineer
- Independently inspected in addition to Municipal Inspectors
- 2-10 Homebuyers Warranty

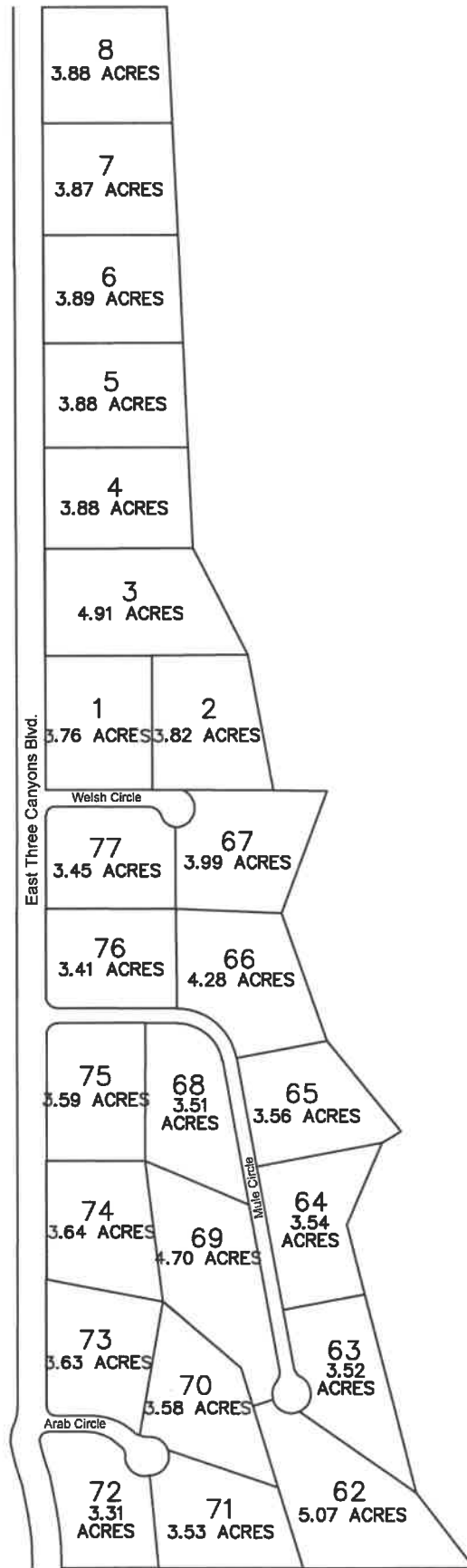


**R.L. Workman
Homes, L.L.C.**
License # ROC253161

Additional Notes:

Because of R. L. Workman Homes, LLC's continuing and ongoing program of research in housing, and the possibility of material shortages, there may be current or future changes made in the building products, materials, methods or design used in your home which may be reflected in the construction of our models. Modifications and price changes such as these may be made without prior notice. Please consult your Sales Representative for additional options which may not be listed.

04/10/2023



Wildhorse

