

Buffalo Soldier Ranch



Plan	Bedrooms	Baths	Sq. Feet	Base Price
1563	3	2	1563	\$324,990
1600	3	2	1600	\$324,990
1608	3 - 4	2	1608	\$324,990
1777	3 - 4	2	1777	\$344,990
1804	3	2	1804	\$359,990
1879	3 - 4	2	1879	\$344,990
1969	4	2	1969	\$364,990
2046	3 - 4	2 - 3	2046	\$389,990
2088	3 - 4	2	2088	\$369,990
2097	3 - 5	2 ½	2097	\$394,990
2303**	3 - 4	2 ½	2303	\$379,990
2339**	3 - 5	2 ½	2339	\$394,990
2559**	3 - 5	2 ½	2559	\$404,990

Price includes lot!

Any of the above homes can be built on your own land.

Ask our sales staff for details.

** Two story home. *Square footage approximate. Some lots have premiums.



**R.L. Workman
Homes, L.L.C.**

License # ROC253161
For more information:
(520) 458-0771

www.rlworkmanhomes.com

BROKER PARTICIPATION WELCOME



ENVIRONMENTS FOR *Living*

Because of R. L. Workman, L.L.C.'s continuing and ongoing program of research in housing, and the possibility of material shortages, there may be current or future changes made in the building products, materials, methods or design used in your home which may be reflected in the construction of our models. Square footage is approximate. Modifications and price changes such as these may be made without prior notice. Lot premiums may apply.

02/28/2025



Buffalo Soldier Ranch

Quality Construction As a local, family-owned company, R.L. Workman Homes, LLC takes pride in their reputation. All plans are stamped by an independent, licensed structural engineer to ensure quality construction from the ground up. The foundation, roof truss and framing system are all designed for structural stability.

Energy Efficient Home ALL homes built by R.L. Workman Homes, LLC earn a certification to save YOU money on your utility costs: Environments for Living Guarantee (environmentsforliving.com). Homes also include high performance Low-E Dual Pane Milgard vinyl windows.

Granite Countertops Thick, luxurious granite countertops in the kitchen with an undermount stainless steel sink. Granite countertops in the bathrooms with undermount sinks.

Stainless Steel Appliances Stainless steel self-cleaning electric range, dishwasher, and microwave/hood. Extensive upgrade options are available.

These models feature:

Custom Crafted Features

- Milgard Styline windows
- Fiberglass entry door with handleset and deadbolt
- Interior raised panel doors with levers
- 18" ceramic tile floors (kitchen/nook, bathrooms, utility)
- Vaulted ceilings (per plan)
- Rounded interior vertical corners (excluding windows)
- Recessed cans in the kitchen
- 2 ceiling fan prewires
- Prewired for 2 TV outlets, 2 ethernet outlets
- Color through roof tile
- Two-tone exterior paint
- Engineered foundation
- Covered patio
- Masonry rear yard with wrought iron gate (common wall)
- Front yard landscaping with drip irrigation
- Front and rear hose bibbs
- Smoke/carbon monoxide detectors
- Finished garage
- Garage door opener(s)
- 200 AMP electrical service
- Concrete driveway and sidewalk
- Underground utilities

Deluxe Kitchens

- Oak cabinets
- Granite slab countertop with stainless steel drop-in sink
- Delta kitchen faucet
- Stainless steel electric range, microwave and dishwasher

Luxurious Bath Designs

- Delta single lever faucets
- Granite with drop-in sink
- 6 x 6 ceramic tile shower/tub surrounds
- Pressure balanced anti-scald valve at shower and tub
- ProFlo dual flush elongated toilets with soft close lid

Energy Efficient Features

- Environments for Living Home
- High performance Milgard vinyl windows with SunCoat Low-E glass
- Stucco insulated exterior wall assembly with cavity rating R-21
- Energy efficient R-38 blown insulation in ceilings
- 40 gallon gas water heater and gas furnace
- PEX pipe for fresh water (lead free)
- On-demand recirculation pump
- Energy efficient 15 Seer air conditioning
- Programmable thermostat
- Plumb gas lines to dryer

Optional Features

- Smart house
- Bay windows
- Custom closets
- Window treatments
- Rain gutters
- Fireplace, pellet stove
- Colored concrete
- Landscaping, built-in grill, courtyard

Quality Construction Features

- Engineered roof truss & framing system
- Engineered foundation
- Stamped by an Independent Licensed Structural Engineer
- Independently inspected in addition to Municipal Inspectors
- 2-10 Homebuyers Warranty



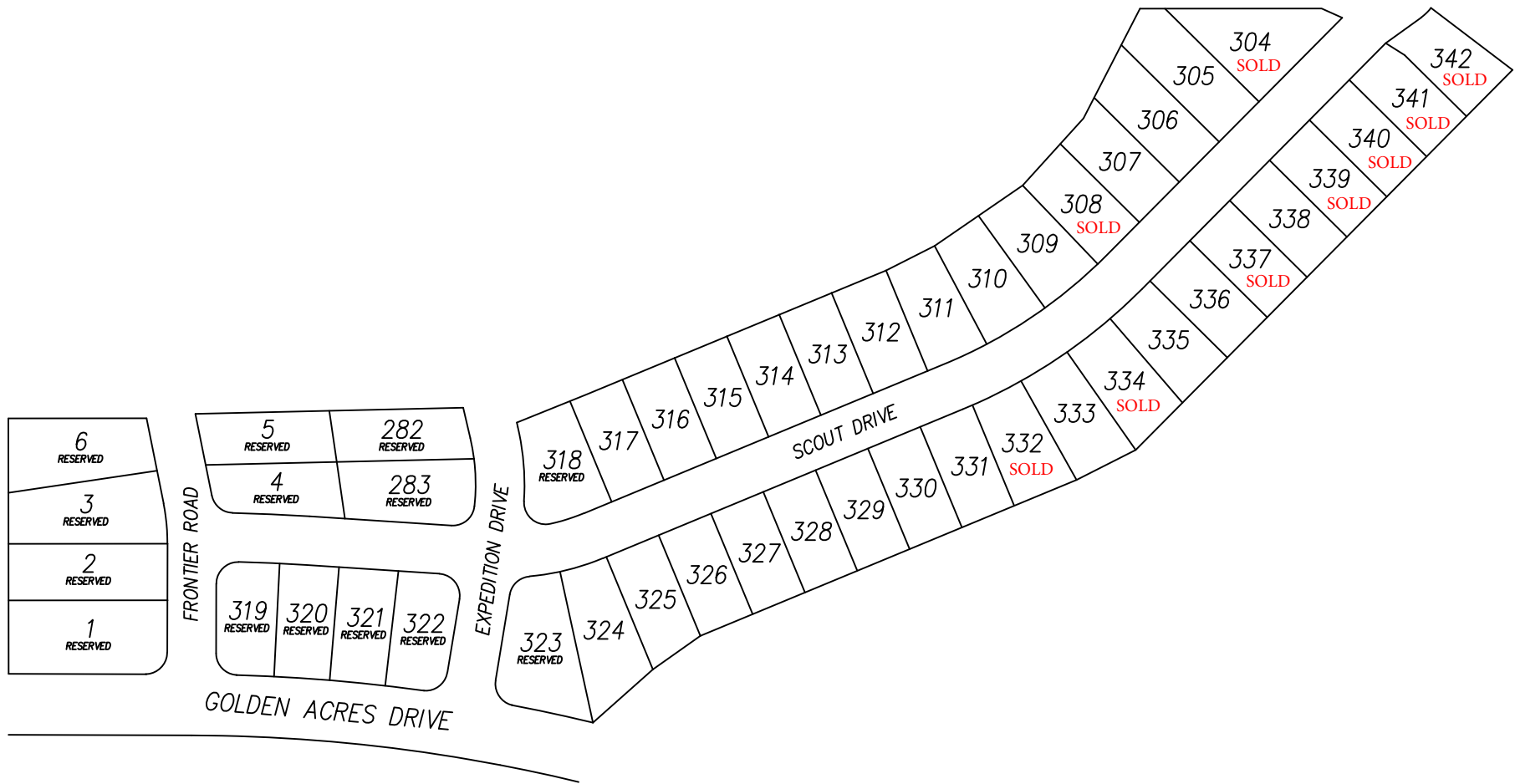
**R.L. Workman
Homes, L.L.C.**

License # ROC253161

Additional Notes:

Because of R. L. Workman Homes, LLC's continuing and ongoing program of research in housing, and the possibility of material shortages, there may be current or future changes made in the building products, materials, methods or design used in your home which may be reflected in the construction of our models. Modifications and price changes such as these may be made without prior notice. Please consult your Sales Representative for additional options which may not be listed.

02/28/2025



Buffalo Soldier Ranch Phase 1

